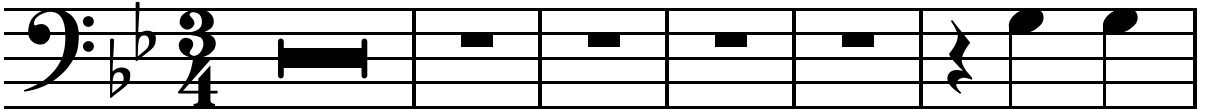


Melodie: „Jesu, der du meine Seele.“

1. Satz

16

Basso. 

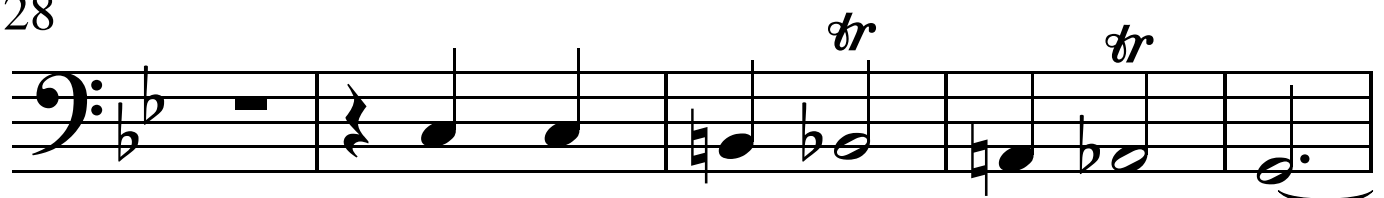
Je - su,

22



der du mei - ne See - le

28



hast durch dei - nen bit - tern Tod,

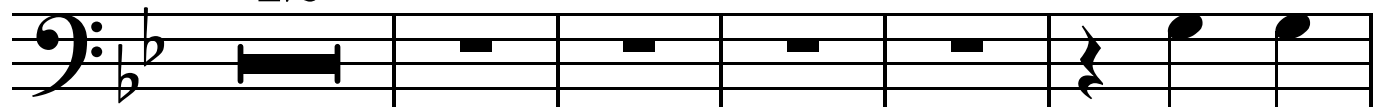
33



— hast durch dei - nen bit - tern Tod

37

12



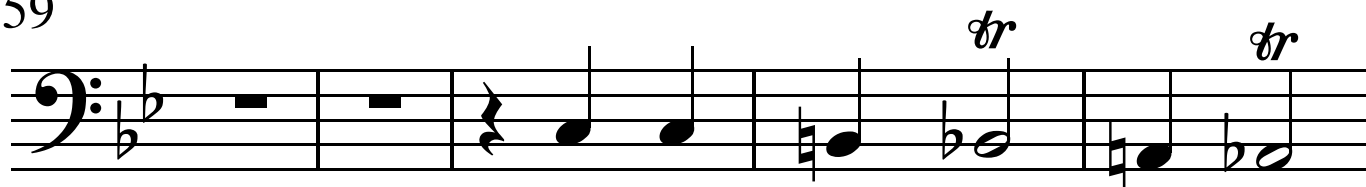
aus des

54



Teu - fels fin - stern Höh - le

59



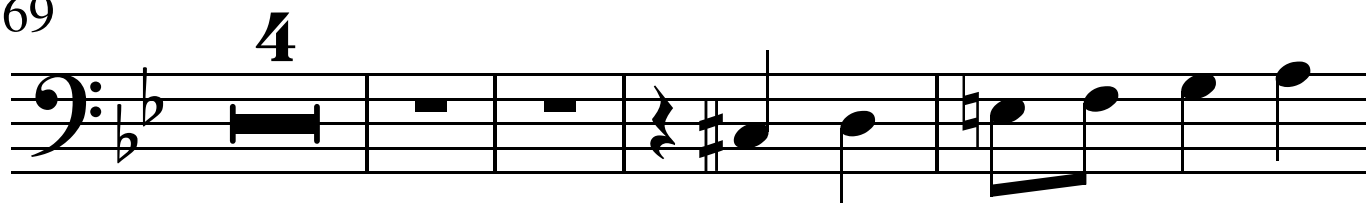
und der schwe - ren See - len -

64



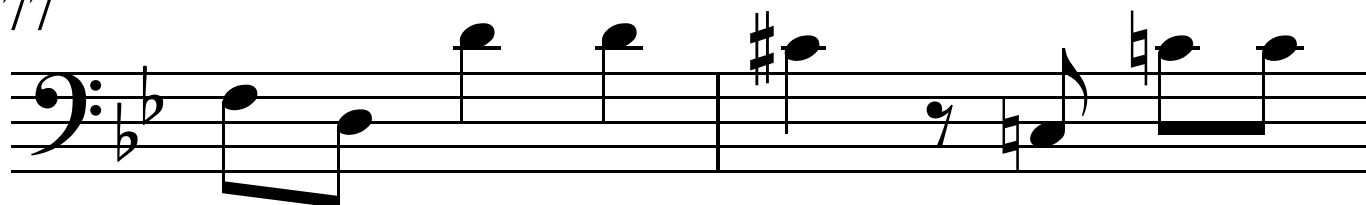
not, — und der schwe - ren See - len - not

69



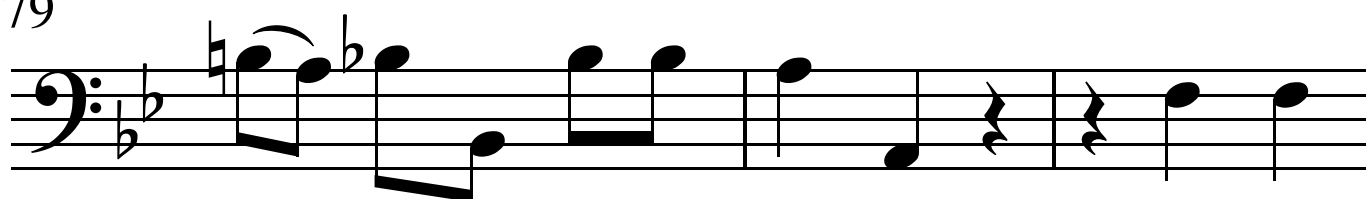
kräf - tig - lich her - aus ge -

77



ris - sen, kräf - tig - lich her - aus ge -

79



ris - sen, her - aus ge - ris - sen, kräf - tig -

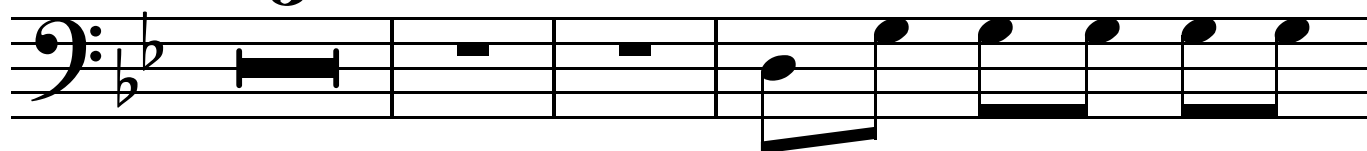
82



lich her - aus ge - ris - sen,

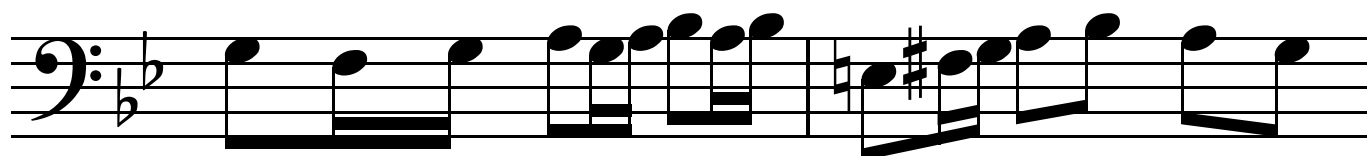
86

3



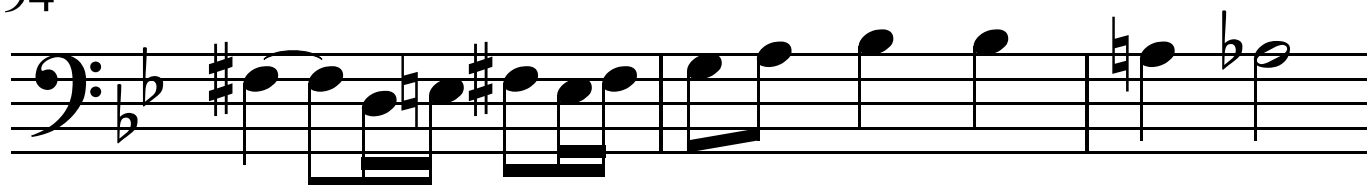
und mich sol - ches las - sen

92



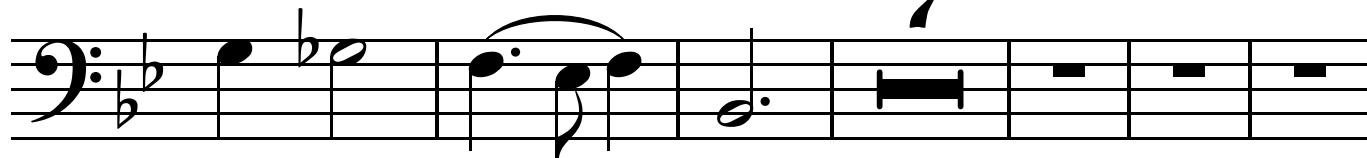
wis - sen, mich sol - ches las - sen

94



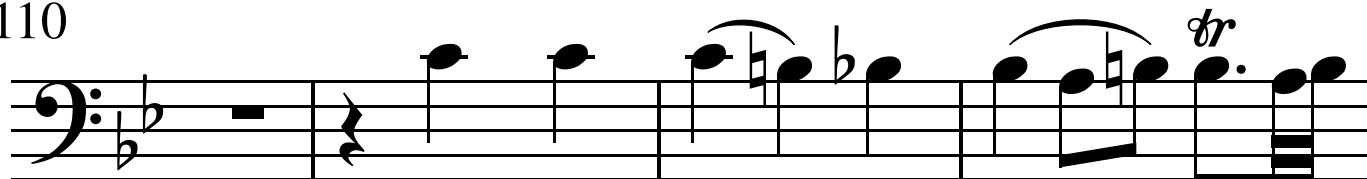
wis - sen, und mich sol - ches

97



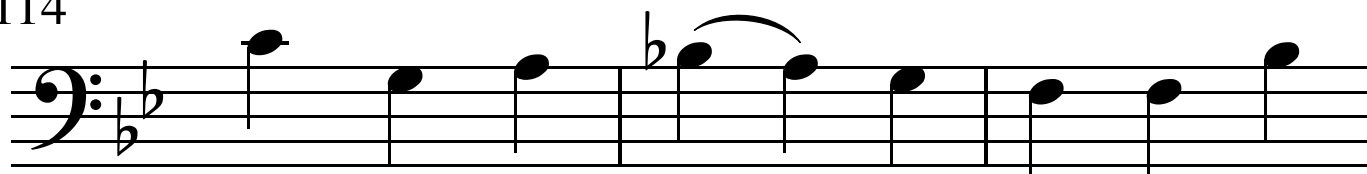
las - sen wis - sen

110



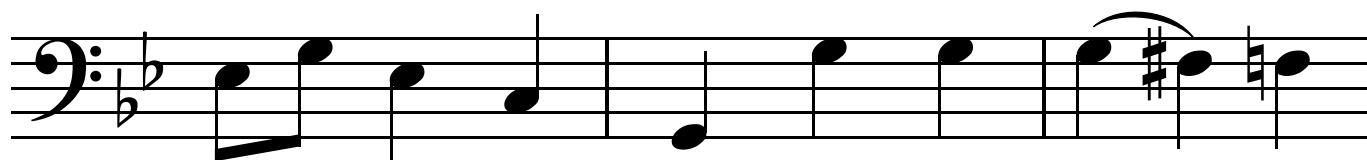
durch dein an - ge - neh - mes

114



Wort, durch dein an - ge - neh - mes, dein

117



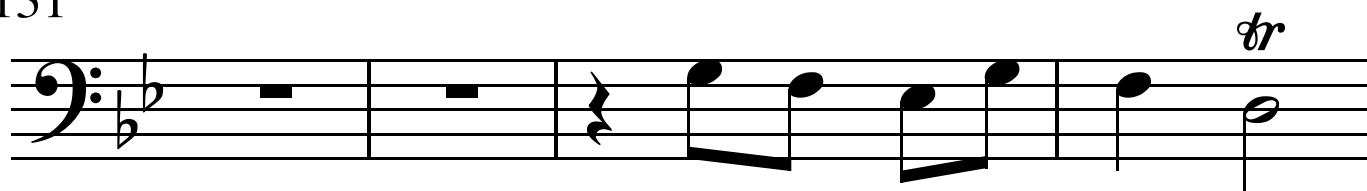
an - ge - neh - mes Wort, durch dein an - ge -

120



neh - mes Wort:

131



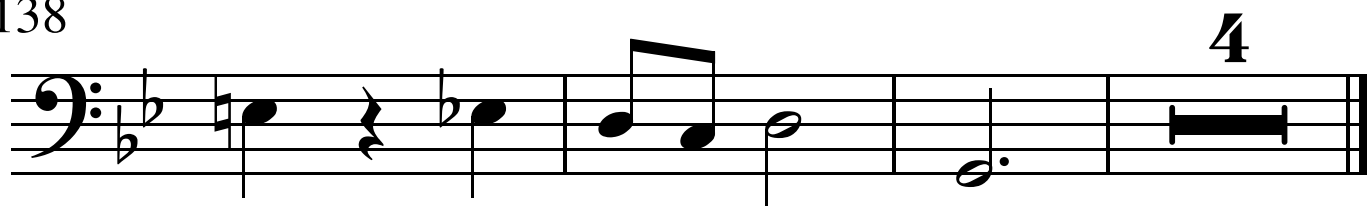
sei doch itzt, o Gott, mein

135



Hort, Gott, mein Hort, sei doch itzt, o

138



Gott, o Gott, mein Hort!